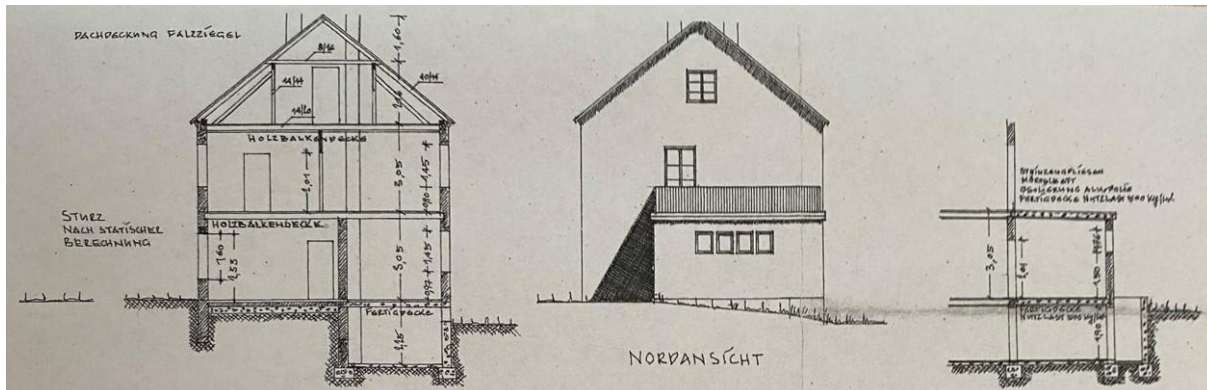
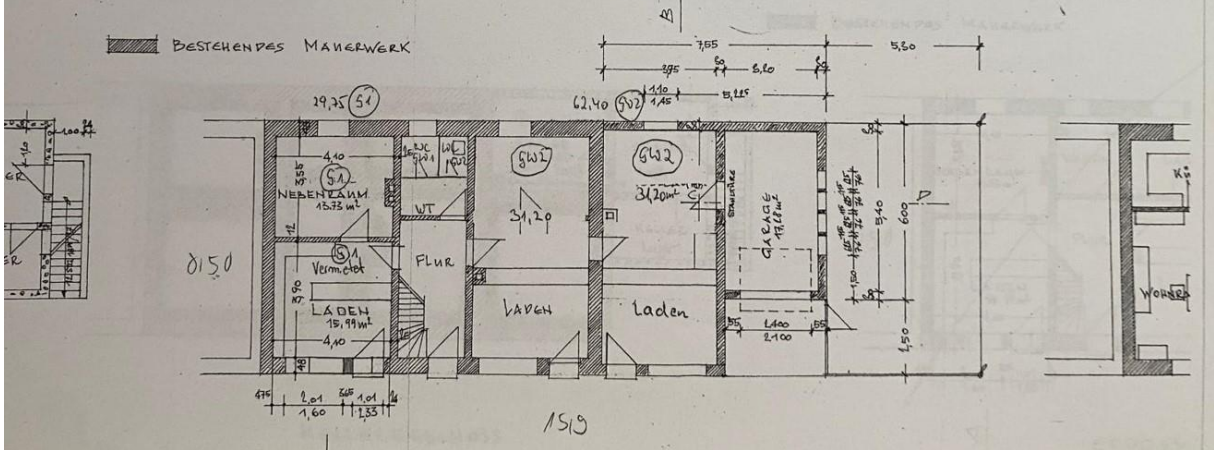




OST-U. STRASSENANSICHT

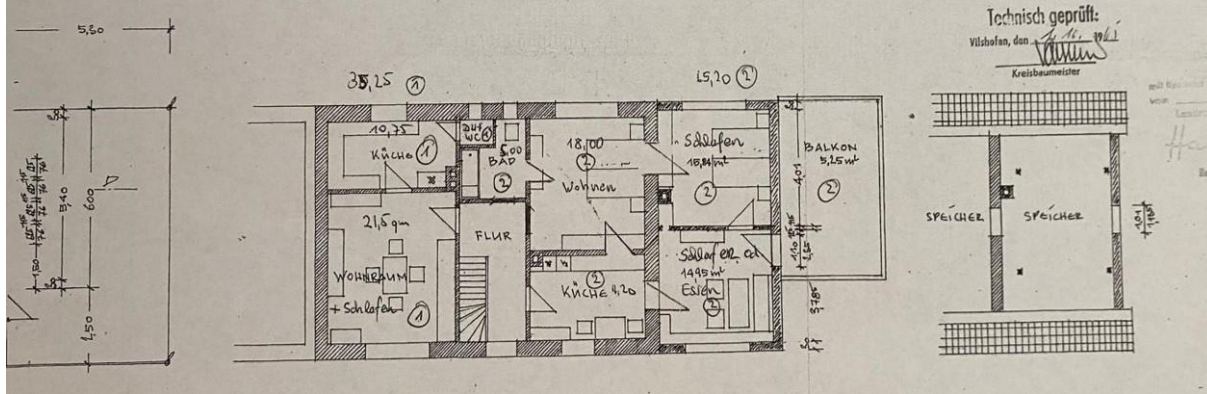
SCHNITT A-E



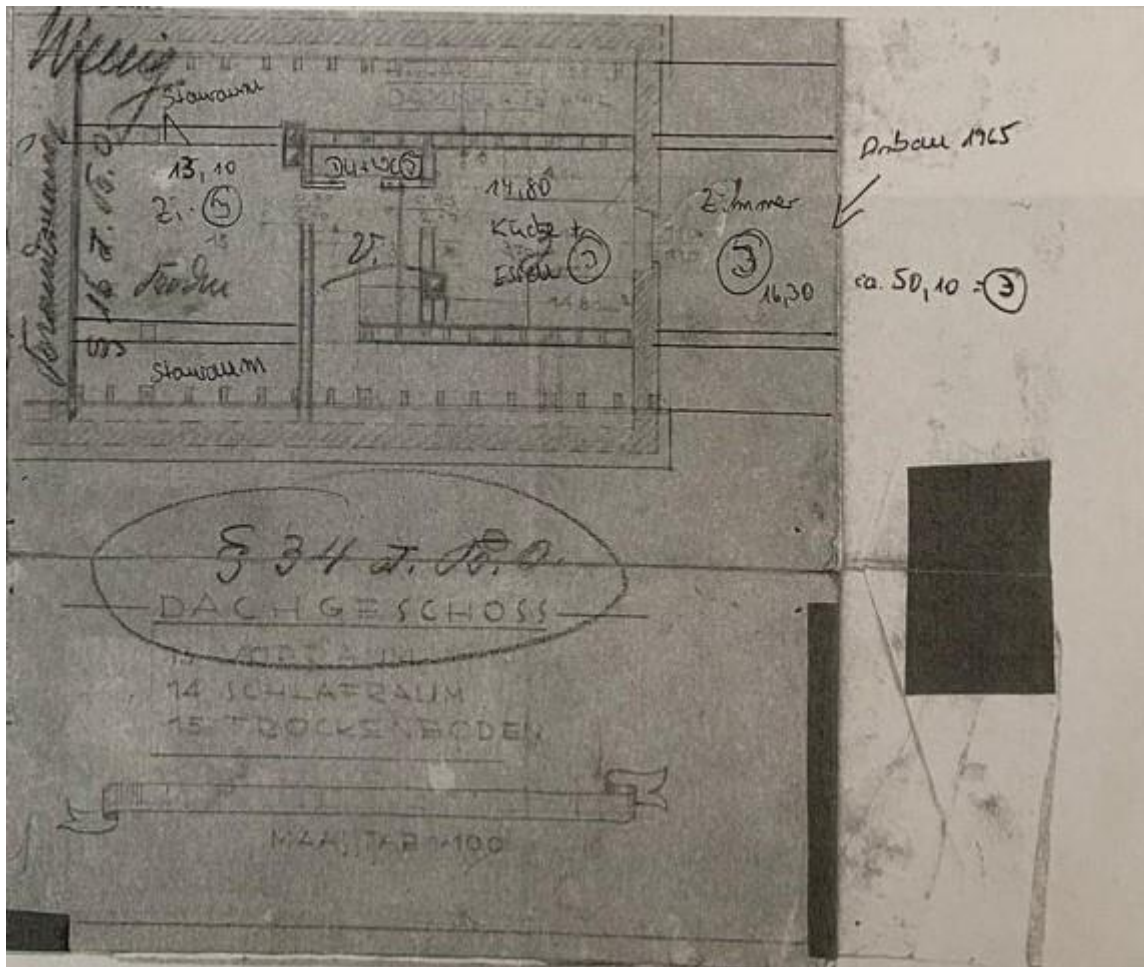
NORDANSICHT

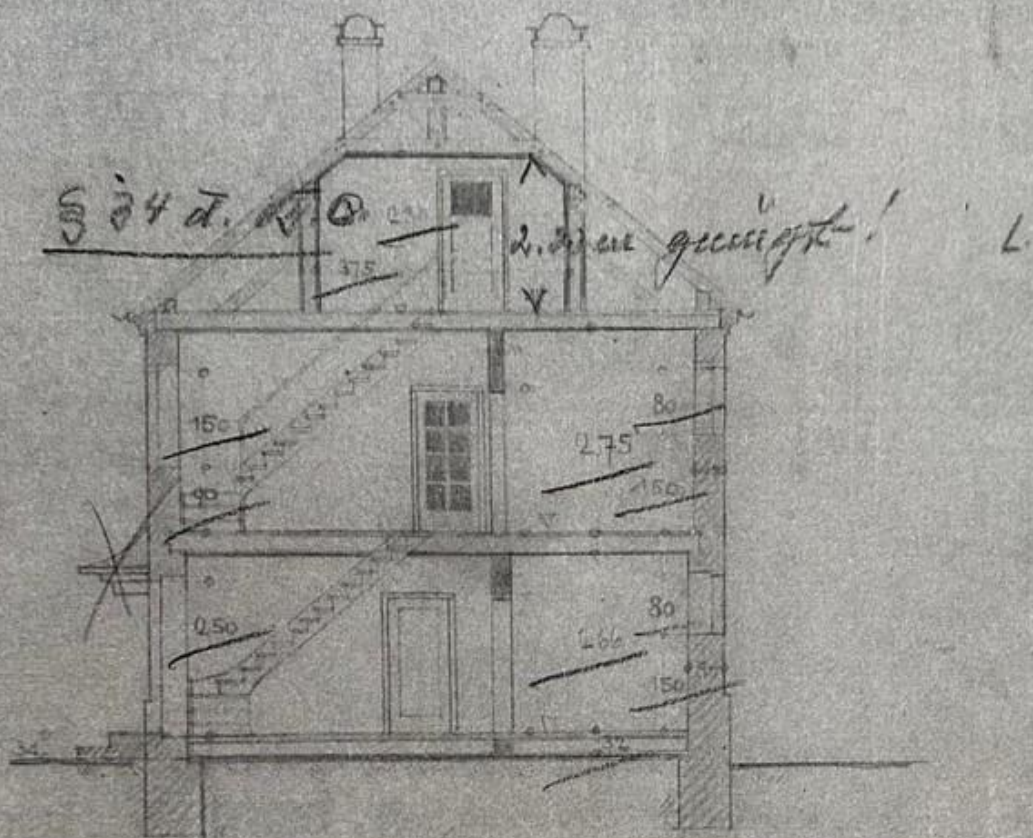
SCHNITT A-B

SCHNITT C-D



Technisch geprüft:
Vilshofen, den 11. 11. 1911
Kreisbaumeister





SCHNITT A-B

ungen am Beschluß

8. 11. 1910

reisbauamt

Wessig

Framm...

S 16 d. 1910

Frieder

